

Candle Power



Versailles
candelabrum
71005

We can substitute real candles for electric in the design of almost any Schonbek crystal chandelier – a rare option in the world of lighting.

In 1870, when Adolf Schonbek established the Schonbek company in Bohemia, social life was illuminated by candlelight, and a crystal chandelier held real candles.

Crystal chandeliers had been invented three centuries earlier. By adding crystal pendants to chandeliers, the weak light of candles was refracted and magnified. Before the crystal chandelier was thought of, it took 120 candles to produce the light of a present-day 100-watt bulb.

Despite the undoubted convenience of electric power, there are some in the current millennium who long for the shadowy rooms and flickering light of the past. Add a few halogen spotlights, and you can have efficient lighting with your romance.



Versailles 2780

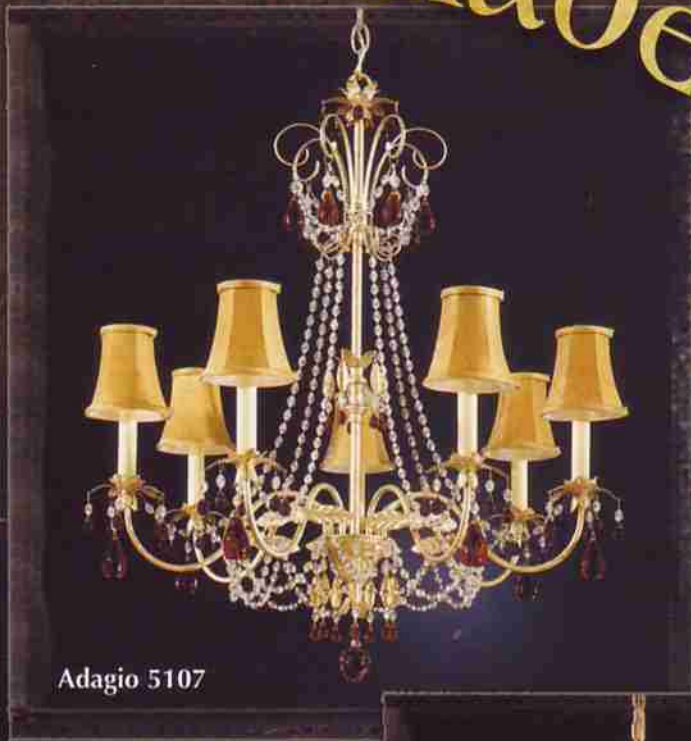


Early American 5149



La Scala 5009

To shade or not to shade.



Adagio 5107



Dorchester 5022



Scheherazade 9622



Versailles 2757
Wall sconce (right)

It's not right for every room. But if you're designing a room that projects a playful attitude towards embellishment, a love of tradition, a mood of nostalgia – if you've indulged in rich fabrics, elaborate moldings, a plethora of collectible *objets* – you might also want to order shades for your Schonbek chandelier.

Shades cast the chandelier light onto the crystal in an interesting way, and warm the ambiance of a room. They personalize your chandelier and give you another color and texture to work into your room design.

Shades can be seasonal. You might like one set for the holidays, a lighter set for summer, a darker set for winter.

You can dress your chandelier up or down with shades. When the tax assessor stops by to review the value of your property, you can put on your casual shades. When a client comes to dinner, the gold shades can appear.

Schonbek shades are designed by us specifically for Schonbek chandeliers. We offer a wide variety of styles, and we are happy to make recommendations. For a catalog sheet, or a conversation about design choices, call us at 800-836-1892. Or visit our website. www.schonbek.com



New Orleans 3659

Ceiling Baskets

Petit Crystal 1558

Crystal: Strass[®], Swarovski Spectra[®] (shown) or Legacy Collection[™] 3 Lights
Diameter: 8" (20 cm)
Body Length: 5 1/2" (14 cm)



Petit Crystal 1560

Crystal: Strass, Swarovski Spectra (shown) or Legacy Collection 4 Lights
Diameter: 10" (25 cm) Body Length: 5 1/2" (14 cm)



petit
crystal

Petit Crystal 1562

Crystal: Strass, Swarovski Spectra (shown) or Legacy Collection 5 Lights
Diameter: 12" (30 cm) Body Length: 6 1/2" (17 cm)



Petit Crystal 1564

Crystal: Strass, Swarovski Spectra (shown) or Legacy Collection 6 Lights
Diameter: 14" (36 cm)
Body Length: 7 1/2" (19 cm)



Petit Crystal 1574

Crystal: Strass, Swarovski Spectra (shown) or Legacy Collection 12 Lights
Diameter: 24" (61 cm) Body Length: 11" (28 cm)



Petit Crystal 1568

Crystal: Strass, Swarovski Spectra (shown) or Legacy Collection 9 Lights
Diameter: 18" (46 cm)
Body Length: 9" (23 cm)

petit crystal deluxe



Custom sizes available.
Call Schonbek at 800-836-1892.

Petit Crystal Deluxe 5897

Crystal: Strass (shown), Swarovski Spectra or Gemcut™ 36 Lights
Diameter: 48" (122 cm) Body Length: 21" (53 cm)
Gold (shown) or silver frame



Petit Crystal Deluxe 5896

Crystal: Strass (shown), Swarovski Spectra or Gemcut 27 Lights
Diameter: 36" (91 cm) Body Length: 17" (43 cm)
Gold (shown) or silver frame



Petit Crystal Deluxe 5898

Crystal: Strass, Swarovski Spectra or Gemcut (shown)
21 Lights Diameter: 30 1/2" (77 cm)
Body Length: 15 1/2" (39 cm)
Gold (shown) or silver frame



Petit Crystal Deluxe 5895

Crystal: Strass, Swarovski Spectra or Gemcut (shown)
13 Lights Diameter: 24" (61 cm)
Body Length: 12" (30 cm)
Gold (shown) or silver frame



Petit Crystal Deluxe 5894

Crystal: Strass, Swarovski Spectra or Gemcut (shown)
9 Lights Diameter: 18" (46 cm)
Body Length: 10" (25 cm)
Gold (shown) or silver frame



Petit Crystal Deluxe 5893

Crystal: Strass, Swarovski Spectra or Gemcut (shown) 6 Lights
Diameter: 14" (36 cm) Body Length: 8" (20 cm)
Silver (shown) or gold frame



Petit Crystal Deluxe 5892

Crystal: Strass, Swarovski Spectra or Gemcut (shown)
5 Lights Diameter: 12" (30 cm)
Body Length: 8" (20 cm)
Gold (shown) or silver frame



Petit Crystal Deluxe 5891

Crystal: Strass, Swarovski Spectra or Gemcut (shown) 4 Lights
Diameter: 10" (25 cm)
Body Length: 7" (18 cm)
Gold (shown) or silver frame



Petit Crystal Deluxe 5890

Crystal: Strass, Swarovski Spectra or Gemcut (shown)
3 Lights Diameter: 8" (20 cm)
Body Length: 6" (15 cm)
Silver (shown) or gold frame





Romanoff



Romanoff 5722 Crystal: Heritage Handcut™ 3 Lights Diameter: 13" (33 cm) Body Length: 14" (36 cm) Variety of finishes, Heirloom Gold (22) shown

Romanoff 5723 Crystal: Heritage Handcut 4 Lights Diameter: 13" (33 cm) Body Length: 9" (23 cm) Variety of finishes, Heirloom Bronze (76) shown

Victorian 5744 Crystal: Heritage Handcut 1 Light Diameter: 13" (33 cm) Body Length: 15" (38 cm) Variety of finishes, Antique Silver (48) shown



Victorian 5747 Crystal: Heritage Handcut 5 Lights Diameter: 24" (61 cm) Body Length: 23" (58 cm) Variety of finishes, Antique Silver (48) shown



Victorian 5745 Crystal: Heritage Handcut 5 Lights Diameter: 21" (53 cm) Body Length: 21" (53 cm) Variety of finishes, Heirloom Gold (22) shown

victorian



Roman Empire 3703 Crystal: Strass® Swarovski Spectra® (shown) or Legacy Collection™ 10 Lights Diameter: 21" (53 cm) Body Length: 12" (30 cm) Variety of finishes, Polished Gold (20) shown



Roman Empire 3702 Crystal: Strass, Swarovski Spectra (shown) or Legacy Collection 6 Lights Diameter: 16 1/2" (42 cm) Body Length: 9" (23 cm) Variety of finishes, Polished Gold (20) shown

ROMAN EMPIRE



Roman Empire 3704 Crystal: Strass, Swarovski Spectra (shown) or Legacy Collection 13 Lights Diameter: 26" (66 cm) Body Length: 14 1/2" (37 cm) Variety of finishes, Polished Gold (20) shown

Rivendell



Rivendell 7860 Crystal: Strass (shown) or Swarovski Spectra
12 Lights Diameter: 24" (61 cm) Body Length: 12" (30 cm)
Variety of finishes, Silvergild (91) shown

Rivendell 7859

Crystal: Strass (shown)
or Swarovski Spectra
9 Lights
Diameter: 17" (43 cm)
Body Length: 11"
(28 cm)
Variety of finishes,
Antique Silver
(48) shown



Rivendell 7858 Crystal: Strass (shown) or Swarovski Spectra
6 Lights Diameter: 14" (36 cm) Body Length: 7" (18 cm)
Variety of finishes, Etruscan Gold (23) shown



Versailles 2784 Crystal: Heritage Handcut (Bohemian Pendeloques)
6 Lights Diameter: 20" (51 cm) Body Length: 15 1/2" (39 cm)
Variety of finishes, Heirloom Bronze (76) shown



versailles



Versailles 2785 Crystal: Heritage Handcut (Bohemian Pendeloques)
8 Lights Diameter: 26" (66 cm) Body Length: 18" (46 cm)
Variety of finishes, Antique Silver (48) shown

renaissance

Renaissance 3785

Crystal: Optic Quality
Heritage Handcut
8 Lights Diameter: 26" (66 cm)
Body Length: 18" (46 cm)
Variety of finishes,
Black (51) shown



Renaissance 3784 Crystal: Optic Quality
Heritage Handcut 6 Lights Diameter: 20" (51 cm)
Body Length: 15 1/2" (39 cm) Variety of finishes,
Heirloom Gold (22) shown

windsor



Windsor 1351

Crystal: Legacy Collection
1 Light
Diameter: 12" (30 cm)
Body Length: 9 1/2" (24 cm)
Variety of finishes,
Etruscan Gold (23) shown

Trilliane 5867

Crystal: Strass® (shown) or Swarovski Spectra®

8 Lights Diameter: 19" (48 cm) Body Length: 9" (23 cm)

Trilliane



Trilliane 5868

Crystal: Strass (shown) or Swarovski Spectra

10 Lights Diameter: 24" (61 cm) Body Length: 10 1/2" (27 cm)



Trilliane 5869

Crystal: Strass (shown) or Swarovski Spectra

18 Lights Diameter: 28" (71 cm) Body Length: 12 1/2" (32 cm)

Additional Standard Design Not Shown

Fixture	Crystal	Lights	Diameter	Body Length
5877	Strass or Swarovski Spectra	23	33" (84 cm)	13 1/2" (34 cm)



To order this or other custom sizes of Trilliane, call Schonbek at 800-836-1892.

Trilliane (Custom)

Crystal: Strass (shown) or Swarovski Spectra

40 Lights

Diameter: 48" (122 cm)

Body Length: 20" (51 cm)



Equinox 2734

Crystal: Gemcut™ 29 Lights
Diameter: 29 1/2" (75 cm) Body Length: 16" (41 cm)
Gold (shown) or silver frame



Equinox 2733

Crystal: Gemcut 13 Lights
Diameter: 22 1/2" (57 cm)
Body Length: 13 1/2" (34 cm)
Gold (shown) or silver frame

Equinox



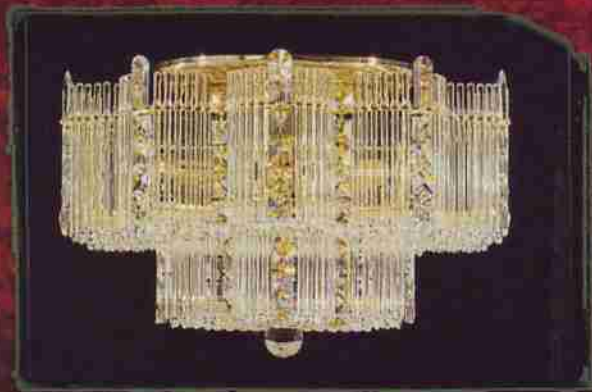
Equinox 2732

Crystal: Gemcut
9 Lights Diameter: 17" (43 cm)
Body Length: 10 1/2" (27 cm)
Gold (shown) or silver frame



Equinox 2731

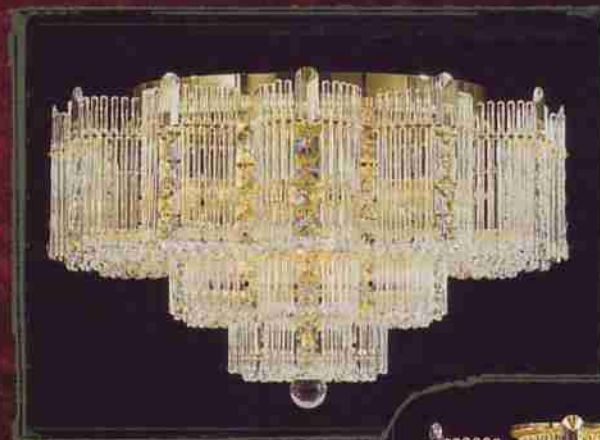
Crystal: Gemcut
5 Lights
Diameter: 12" (30 cm)
Body Length: 9 1/2" (24 cm)
Gold (shown) or silver frame



Colonade 1938

Crystal: Gemcut
10 Lights
Diameter: 19" (48 cm)
Body Length: 12" (30 cm)

Colonade



Colonade 1939

Crystal: Gemcut
15 Lights
Diameter: 22" (56 cm)
Body Length: 13" (33 cm)



Colonade 1937

Crystal: Gemcut
8 Lights
Diameter: 16" (41 cm)
Body Length: 11" (28 cm)



Colonade 1936

Crystal: Gemcut
6 Lights
Diameter: 13" (33 cm)
Body Length: 11" (28 cm)



Excelsior 2408
 Crystal: Gemcut™ 6 Lights
 Diameter: 18" (46 cm)
 Body Length: 10" (25 cm)



Excelsior 2406
 Crystal: Gemcut 3 Lights
 Diameter: 12 1/2" (32 cm)
 Body Length: 8 1/2" (22 cm)

Excelsior

Excelsior 2407
 Crystal: Gemcut 4 Lights
 Diameter: 15" (38 cm)
 Body Length: 9 1/2" (24 cm)



Solitaire 1812
 Crystal: Strass® (shown) or Gemcut
 13 Lights Diameter: 26" (66 cm)
 Body Length: 16" (41 cm)

Solitaire 1804

Crystal: Strass (shown) or Gemcut
 10 Lights Diameter: 19 1/2" (50 cm)
 Body Length: 15" (38 cm)



solitaire



Solitaire 1800
 Crystal: Strass (shown) or Gemcut
 5 Lights
 Diameter: 15" (38 cm)
 Body Length: 10" (25 cm)



Solitaire 1810
 Crystal: Strass or Gemcut (shown)
 3 Lights Diameter: 13" (33 cm)
 Body Length: 8 1/2" (22 cm)

contessa



Contessa 4826
 Crystal: Strass (shown) or Gemcut
 12 Lights Diameter: 17" (43 cm)
 Body Length: 11" (28 cm)
 Gold (shown) or silver frame





To order this or other custom sizes of Empire, call Schonbek at 800-836-1892.

For more about custom Empire styles see page 202.

Empire 5802
 Crystal: Strass (shown) or Legacy Collection™
 24 Lights
 Diameter: 48" (122 cm)
 Body Length: 20½" (52 cm)



Rialto 5038
 Crystal: Strass, Swarovski Spectra® (shown) or Legacy Collection
 3 Lights Diameter: 8" (20 cm)
 Body Length: 6" (15 cm)
 Variety of finishes, Bronze Umber (75) shown

Empire



Rialto 5042
 Crystal: Strass, Swarovski Spectra (shown) or Legacy Collection
 5 Lights
 Diameter: 12" (30 cm)
 Body Length: 7" (18 cm)
 Variety of finishes, Parchment Gold (27) shown



Rialto 5040
 Crystal: Strass, Swarovski Spectra (shown) or Legacy Collection
 4 Lights Diameter: 10" (25 cm)
 Body Length: 6½" (17 cm)
 Variety of finishes, Ancient Bronze (65) shown

Rialto

Rialto 5048
 Crystal: Strass, Swarovski Spectra (shown) or Legacy Collection
 8 Lights Diameter: 18" (46 cm)
 Body Length: 7½" (19 cm)
 Variety of finishes, Heirloom Gold (22) shown



Rialto 5044
 Crystal: Strass, Swarovski Spectra (shown) or Legacy Collection
 6 Lights
 Diameter: 14" (36 cm)
 Body Length: 7½" (19 cm)
 Variety of finishes, Black Pearl (49) shown



Rialto 5054
 Crystal: Strass, Swarovski Spectra (shown) or Legacy Collection
 14 Lights
 Diameter: 24" (61 cm)
 Body Length: 12" (30 cm)
 Variety of finishes, Heirloom Silver (44) shown



Camelot 2616
Crystal: Gemcut™
3 Lights
Diameter: 11" (28 cm)
Body Length: 7" (18 cm)
Gold (shown) or silver frame



Camelot 2617
Crystal: Gemcut
4 Lights
Diameter: 15 1/2" (39 cm)
Body Length: 10" (25 cm)
Gold (shown) or silver frame



Camelot 2618
Crystal: Gemcut
6 Lights
Diameter: 19 1/2" (50 cm)
Body Length: 11" (28 cm)
Gold (shown) or silver frame



Camelot 2619
Crystal: Gemcut
14 Lights
Diameter: 24" (61 cm)
Body Length: 14" (36 cm)
Gold (shown) or silver frame



Camelot 2620
Crystal: Gemcut
21 Lights
Diameter: 28" (71 cm)
Body Length: 15 1/2" (39 cm)
Gold (shown) or silver frame

camelot

wall sconces

esplanade



Adagio 5102
 Crystal: Vintage Collection™
 2 Lights
 Diameter: 13" (33 cm)
 Body Length: 10" (25 cm)
 Extension: 4½" (11 cm)
 Variety of finishes,
 French Gold (26) shown

adagio



Esplanade 6870
 Crystal: Vintage Collection
 3 Lights (2 candles + 1 interior)
 Shades included
 Diameter: 14½" (37 cm)
 Body Length: 18½" (47 cm)
 Extension: 7" (18 cm)
 Variety of finishes,
 French Gold (26) shown



Adagio 5102
 Crystal: Vintage
 Collection with amber
 colored crystal 2 Lights
 Diameter: 13" (33 cm)
 Body Length: 10" (25 cm)
 Extension: 4½" (11 cm)
 Variety of finishes,
 French Gold (26) shown

Early American 5143
 Crystal: Legacy Collection
 1 Light
 Diameter: 5½" (14 cm)
 Body Length: 11" (28 cm)
 Extension: 6½" (17 cm)
 Variety of finishes,
 Silvergild (91) shown



early american

Rialto 5055 Crystal: Strass®, Swarovski
 Spectra® or Legacy Collection™ (shown)
 3 Lights Diameter: 9" (23 cm)
 Body Length: 7½" (19 cm) Extension: 4½" (11 cm)
 Variety of finishes, Parchment Bronze (74) shown



rialto



Early American 5144
 Crystal: Legacy Collection
 2 Lights Diameter: 10½" (27 cm)
 Body Length: 11" (28 cm)
 Extension: 6½" (17 cm)
 Variety of finishes, Heirloom
 Bronze (76) shown

Timbrel



Timbrel 6902
 Rock Crystal 2 Lights
 Diameter: 15" (38 cm)
 Body Length: 22½" (57 cm)
 Extension: 8" (20 cm)
 Variety of finishes,
 French Gold (26) shown



Buckingham

Buckingham 9822
 Rock Crystal 2 Lights
 Diameter: 11" (28 cm)
 Body Length: 19½" (50 cm)
 Extension: 6" (15 cm)
 Variety of finishes,
 Antique Silver (48) shown

Tesoro



Tesoro 9702 Rock Crystal 2 Lights
 Diameter: 15½" (39 cm) Body Length: 23" (58 cm)
 Extension: 9½" (24 cm) Variety of finishes,
 Antique Pewter (47) shown



La Scala 5403 Rock Crystal 5 Lights
 Diameter: 22" (56 cm) Body Length: 28" (71 cm)
 Extension: 13½" (34 cm) Variety of finishes,
 Parchment Bronze (74) shown

La Scala 5401
 Rock Crystal 2 Lights
 Diameter: 15" (38 cm)
 Body Length: 17½" (44 cm)
 Extension: 6" (15 cm)
 Variety of finishes,
 Heirloom Bronze
 (76) shown

Rock Crystal La Scala



La Scala 5400
 Rock Crystal
 1 Light
 Diameter: 4½" (11 cm)
 Body Length: 16" (41 cm)
 Extension: 8½" (22 cm)
 Variety of finishes,
 Parchment Gold (27) shown



La Scala 5402
 Rock Crystal 3 Lights
 Diameter: 15" (38 cm)
 Body Length: 17½" (44 cm)
 Extension: 8½" (22 cm)
 Variety of finishes,
 Parchment Gold (27) shown



Kirov 7170 Crystal: Heritage Handcut™ 2 Lights
 Diameter: 15" (38 cm) Body Length: 22" (56 cm)
 Extension: 7" (18 cm) Variety of finishes,
 Heirloom Silver (44) shown

KIROV



Kirov 7169
 Crystal: Heritage Handcut
 1 Light
 Diameter: 8" (20 cm)
 Body Length: 18" (46 cm)
 Extension: 9" (23 cm)
 Variety of finishes,
 Heirloom Gold (22) shown

Versailles 2761
 Crystal: Heritage Handcut (Bohemian Pendeloques)
 2 Lights Diameter: 15" (38 cm)
 Body Length: 21½" (55 cm) Extension: 8" (20 cm)
 Variety of finishes, Heirloom Gold (22) shown



These wall sconces go on either side of a mirror or along a staircase.



Versailles 2758 (left sconce)
 Crystal: Heritage Handcut
 (Bohemian Pendeloques)
 2 Lights Diameter: 14" (36 cm)
 Body Length: 22½" (57 cm)
 Extension: 4½" (11 cm)
 Variety of finishes,
 Heirloom Bronze (76) shown



Versailles 2757 (right sconce)
 Crystal: Heritage Handcut
 (Bohemian Pendeloques)
 2 Lights Diameter: 14" (36 cm)
 Body Length: 22½" (57 cm)
 Extension: 4½" (11 cm)
 Variety of finishes,
 Heirloom Bronze (76) shown



Versailles 2763
 Crystal: Heritage Handcut
 (Bohemian Pendeloques)
 5 Lights
 Diameter: 17" (43 cm)
 Body Length: 27" (69 cm)
 Extension: 10" (25 cm)
 Variety of finishes,
 French Provincial (34) shown



Versailles 2756
 Crystal: Heritage Handcut
 (Bohemian Pendeloques)
 1 Light Diameter: 6" (15 cm)
 Body Length: 15½" (39 cm)
 Extension: 5½" (14 cm)
 Variety of finishes,
 Antique Silver (48) shown

versailles

Versailles 2762
 Crystal: Heritage Handcut
 (Bohemian Pendeloques)
 3 Lights
 Diameter: 15" (38 cm)
 Body Length: 22" (56 cm)
 Extension: 8" (20 cm)
 Variety of finishes,
 Antique Silver (48) shown



La Scala 5071 Crystal: Heritage Handcut™
 3 Lights Diameter: 11½" (29 cm)
 Body Length: 17" (43 cm) Extension: 7½" (19 cm)
 Variety of finishes, Heirloom Gold (22) shown



La Scala 5070 Crystal: Heritage Handcut
 2 Lights Diameter: 11½" (29 cm)
 Body Length: 16½" (42 cm) Extension: 6½" (17 cm)
 Variety of finishes, Antique Silver (48) shown

La Scala 5069
 Crystal: Heritage Handcut
 1 Light
 Diameter: 5" (13 cm)
 Body Length: 16" (41 cm)
 Extension: 8" (20 cm)
 Variety of finishes,
 Parchment Bronze
 (74) shown



La Scala 5000
 Crystal: Heritage Handcut
 1 Light
 Diameter: 4½" (11 cm)
 Body Length: 16" (41 cm)
 Extension: 8½" (22 cm)
 Variety of finishes,
 Ancient Bronze
 (65) shown

la scala



La Scala 5002
 Crystal: Heritage Handcut
 3 Lights
 Diameter: 15" (38 cm)
 Body Length: 17" (43 cm)
 Extension: 8½" (22 cm)
 Variety of finishes,
 Heirloom Bronze
 (76) shown



La Scala 5003
 Crystal: Heritage Handcut 5 Lights Diameter: 22" (56 cm)
 Body Length: 27" (69 cm) Extension: 13½" (34 cm)
 Variety of finishes, Antique Pewter (47) shown

La Scala 5001
 Crystal: Heritage Handcut
 2 Lights
 Diameter: 15" (38 cm)
 Body Length: 17" (43 cm)
 Extension: 6" (15 cm)
 Variety of finishes,
 Golden Birch
 (35) shown



victorian

Victorian 5742

Crystal: Heritage Handcut
2 Lights
Diameter: 9 1/2" (24 cm)
Body Length: 13 1/2" (34 cm)
Extension: 5" (13 cm)
Variety of finishes,
Heirloom Gold (22) shown



Victorian 5743

Crystal: Heritage Handcut 2 Lights Diameter: 12 1/2" (32 cm)
Body Length: 13" (33 cm) Extension: 6 1/2" (17 cm)
Variety of finishes, Antique Silver (48) shown

Romanoff 5712

Crystal: Heritage Handcut
3 Lights Diameter: 14" (36 cm)
Body Length: 12 1/2" (32 cm) Extension: 7" (18 cm)
Variety of finishes, Heirloom Bronze (76) shown



Romanoff

Romanoff bath bars shown
on page 333.



Romanoff 5711

Crystal: Heritage Handcut
3 Lights
Diameter: 14" (36 cm)
Body Length: 10 1/2" (27 cm)
Extension: 7" (18 cm)
Variety of finishes,
Heirloom Silver (44) shown

Roman Empire 3710

Crystal: Strass,® Swarovski Spectra® (shown)
or Legacy Collection™
6 Lights Diameter: 15 1/2" (39 cm)
Body Length: 20 1/2" (52 cm) Extension: 7" (18 cm)
Variety of finishes, Polished Gold (20) shown

ROMAN EMPIRE



Roman Empire 3708

Crystal: Strass, Swarovski Spectra (shown)
or Legacy Collection 3 Lights
Diameter: 15 1/2" (39 cm)
Body Length: 9" (23 cm)
Extension: 7" (18 cm)
Variety of finishes, Polished Gold (20) shown



Renaissance 3761

Crystal: Optic Quality Heritage Handcut

2 Lights Diameter: 15" (38 cm)

Body Length: 22 1/2" (57 cm)

Extension: 8" (20 cm)

Variety of finishes, Heirloom Gold (22) shown



These wall sconces go on either side of a mirror or along a staircase.



Renaissance 3758 (left sconce)

Crystal: Optic Quality Heritage Handcut™

2 Lights Diameter: 14" (36 cm)

Body Length: 22 1/2" (57 cm)

Extension: 4 1/2" (11 cm)

Variety of finishes, Antique Silver (48) shown



Renaissance 3757 (right sconce)

Crystal: Optic Quality Heritage Handcut

2 Lights Diameter: 14" (36 cm)

Body Length: 22 1/2" (57 cm)

Extension: 4 1/2" (11 cm)

Variety of finishes, Antique Silver (48) shown

Renaissance 3762

Crystal: Optic Quality Heritage Handcut

3 Lights

Diameter: 15" (38 cm)

Body Length: 22" (56 cm)

Extension: 8" (20 cm)

Variety of finishes, Antique Silver (48) shown



Renaissance 3756

Crystal: Optic Quality Heritage Handcut

1 Light

Diameter: 6" (15 cm)

Body Length: 15 1/2" (39 cm)

Extension: 5 1/2" (14 cm)

Variety of finishes, Antique Silver (48) shown



Renaissance 3763

Crystal: Optic Quality Heritage Handcut

5 Lights

Diameter: 17" (43 cm)

Body Length: 28" (71 cm)

Extension: 10" (25 cm)

Variety of finishes, French Provincial (34) shown



Renaissance

Maria Theresa



Maria Theresa 5602

Crystal: Optic Quality Heritage Handcut
3 Lights Diameter: 16" (41 cm)
Body Length: 17" (43 cm) Extension: 9" (23 cm)
Variety of finishes, French Gold (26) shown



Maria Theresa 5600

Crystal: Optic Quality Heritage Handcut
1 Light Diameter: 5 1/2" (14 cm)
Body Length: 16 1/2" (42 cm)
Extension: 8" (20 cm)
Variety of finishes,
Antique Silver (48) shown



Dorchester 5018

Crystal: Heritage Handcut
3 Lights
Diameter: 16" (41 cm)
Body Length: 11" (28 cm)
Extension: 9 1/2" (24 cm)
Variety of finishes,
Heirloom Gold (22) shown



Dorchester 5029

Crystal: Heritage Handcut 5 Lights
Diameter: 24" (61 cm) Body Length: 22 1/2" (57 cm)
Extension: 14 1/2" (37 cm)
Variety of finishes, Heirloom Gold (22) shown



Dorchester 5017

Crystal: Heritage Handcut
1 Light Diameter: 4 1/2" (11 cm)
Body Length: 12" (30 cm)
Extension: 9 1/2" (24 cm)
Variety of finishes, Golden Birch (35) shown



Dorchester

Fairfax



Fairfax 5036
Crystal: Heritage Handcut
2 Lights
Diameter: 13" (33 cm)
Body Length: 12" (30 cm)
Extension: 8" (20 cm)



Fairfax 5035
Crystal: Heritage Handcut
1 Light
Diameter: 5" (13 cm)
Body Length: 12 1/2" (32 cm)
Extension: 8" (20 cm)



Fairfax 5037
Crystal: Heritage Handcut™
3 Lights
Diameter: 15" (38 cm)
Body Length: 17" (43 cm)
Extension: 7 1/2" (19 cm)

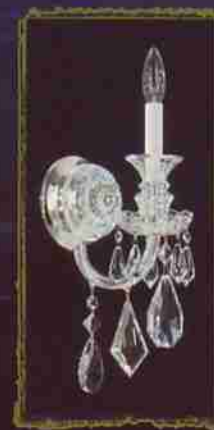


Hamilton 5703
Crystal: Heritage Handcut
3 Lights
Diameter: 14 1/2" (37 cm)
Body Length: 23" (58 cm)
Extension: 7 1/2" (19 cm)

HAMILTON



Hamilton 5702
Crystal: Heritage Handcut
2 Lights
Diameter: 14 1/2" (37 cm)
Body Length: 20" (51 cm)
Extension: 6" (15 cm)



Hamilton 5701
Crystal: Heritage Handcut
1 Light
Diameter: 5" (13 cm)
Body Length: 17" (43 cm)
Extension: 7 1/2" (19 cm)



Sterling 2992
 Crystal: Strass® Heritage
 Handcut (shown)
 or Legacy Collection™
 3 Lights Diameter: 15½" (39 cm)
 Body Length: 20½" (52 cm)
 Extension: 7½" (19 cm)
 Silver (shown) or gold frame

sterling

Sterling 2991

Crystal: Strass,
 Heritage Handcut (shown)
 or Legacy Collection 2 Lights
 Diameter: 15½" (39 cm)
 Body Length: 16½" (42 cm)
 Extension: 5½" (14 cm)
 Silver (shown) or gold frame



Olde World 6807

Crystal: Strass 2 Lights
 Diameter: 14½" (37 cm)
 Body Length: 16" (41 cm)
 Extension: 6" (15 cm)
 Silver (shown) or gold frame



Olde World 6806 Crystal: Strass 5 Lights
 Diameter: 18" (46 cm) Body Length: 23" (58 cm)
 Extension: 9½" (24 cm) Silver (shown) or gold frame

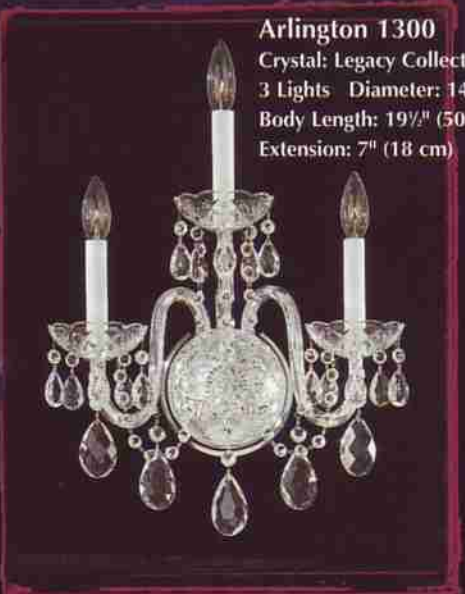


Olde World 6808 Crystal: Strass 3 Lights
 Diameter: 14½" (37 cm) Body Length: 20" (51 cm)
 Extension: 7" (18 cm) Silver (shown) or gold frame

olde world

Arlington 1300

Crystal: Legacy Collection
 3 Lights Diameter: 14½" (37 cm)
 Body Length: 19½" (50 cm)
 Extension: 7" (18 cm)



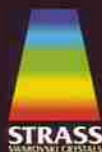
Olde World 6805

Crystal: Strass
 1 Light
 Diameter: 5" (13 cm)
 Body Length:
 15" (38 cm)
 Extension:
 7½" (19 cm)
 Silver (shown)
 or gold frame



Arlington 1301

Crystal: Legacy Collection
 2 Lights Diameter: 14½" (37 cm)
 Body Length: 16" (41 cm)
 Extension: 6" (15 cm)



Arlington



Rivendell 7854 Crystal: Strass® (shown) or Swarovski Spectra®
 3 Lights Diameter: 12" (30 cm)
 Body Length: 12" (30 cm)
 Extension: 6" (15 cm)
 Variety of finishes,
 Natural Rust (42) shown



Rivendell 7855
 Crystal: Strass or Swarovski Spectra (shown)
 2 Lights
 Diameter: 12" (30 cm)
 Body Length: 10" (25 cm)
 Extension: 5 1/2" (14 cm)
 Variety of finishes,
 Antique Silver (48) shown

Rivendell 7857
 Crystal: Strass (shown) or Swarovski Spectra
 5 Lights
 Diameter: 19 1/2" (50 cm)
 Body Length: 20" (51 cm)
 Extension: 11" (28 cm)
 Variety of finishes,
 French Lace (32) shown



Rivendell

Rivendell bath bars shown on page 333.

Rivendell 7849

Crystal: Strass (shown) or Swarovski Spectra
 1 Light Diameter: 5 1/2" (14 cm) Body Length: 11 1/2" (29 cm)
 Extension: 8" (20 cm) Variety of finishes, Silvergild (91) shown



Rivendell 7856

Crystal: Strass (shown) or Swarovski Spectra
 2 Lights Diameter: 13" (33 cm)
 Body Length: 12 1/2" (32 cm)
 Extension: 6 1/2" (17 cm)
 Variety of finishes, Tourmaline (82) shown



Rivendell 7850

Crystal: Strass (shown) or Swarovski Spectra
 1 Light
 Diameter: 5 1/2" (14 cm)
 Body Length: 11 1/2" (29 cm)
 Extension: 8" (20 cm)
 Variety of finishes,
 Etruscan Gold (23) shown



Rivendell 6704 Crystal: Strass (shown) or Swarovski Spectra
 3 Lights Diameter: 13 1/2" (34 cm) Body Length: 22" (56 cm)
 Extension: 6 1/2" (17 cm) Variety of finishes, Bronze Umber (75) shown



scheherazade

Scheherazade 9620

Crystal: Strass 2 Lights Diameter: 14 1/2" (37 cm)
Body Length: 19" (48 cm) Extension: 9" (23 cm)
Variety of finishes, Antique Silver (48) shown



Mirage 9631 Crystal: Strass
2 Lights Diameter: 9 1/2" (24 cm)
Body Length: 15 1/2" (39 cm)
Extension: 6" (15 cm)



Mirage

Trilliane 5886

Crystal: Strass (shown) or Swarovski Spectra
2 Lights Diameter: 11" (28 cm)
Body Length: 8 1/2" (22 cm)
Extension: 5 1/2" (14 cm)



Trilliane 5888

Crystal: Strass (shown) or Swarovski Spectra
4 Lights Diameter: 12 1/2" (32 cm)
Body Length: 19" (48 cm)
Extension: 6 1/2" (17 cm)

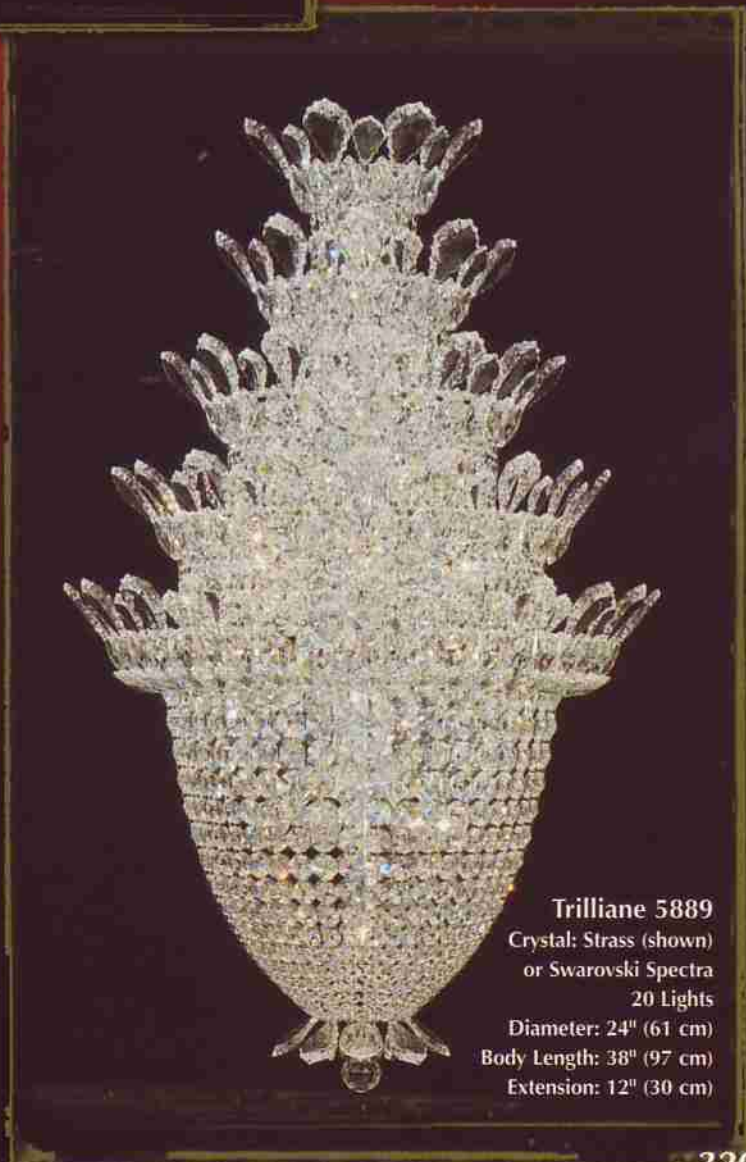


trilliane



Trilliane 5876

Crystal: Strass (shown) or Swarovski Spectra
3 Lights Diameter: 11 1/2" (29 cm)
Body Length: 10 1/2" (27 cm)
Extension: 6" (15 cm)



Trilliane 5889

Crystal: Strass (shown) or Swarovski Spectra
20 Lights Diameter: 24" (61 cm)
Body Length: 38" (97 cm)
Extension: 12" (30 cm)

petit crystal deluxe



Petit Crystal Deluxe 6602

Crystal: Strass, Swarovski Spectra[®] or Gemcut[™] (shown)
4 Lights
Diameter: 12" (30 cm)
Body Length: 8 1/2" (22 cm)
Extension: 6" (15 cm)
Gold (shown) or silver frame



Petit Crystal Deluxe 6600

Crystal: Strass, Swarovski Spectra or Gemcut (shown)
3 Lights
Diameter: 10" (25 cm)
Body Length: 7 1/2" (19 cm)
Extension: 5" (13 cm)
Gold (shown) or silver frame



Petit Crystal Deluxe 6603

Crystal: Strass, Swarovski Spectra (shown) or Gemcut
7 Lights
Diameter: 12" (30 cm)
Body Length: 22" (56 cm)
Extension: 6" (15 cm)
Gold (shown) or silver frame



Petit Crystal Deluxe 6601

Crystal: Strass, Swarovski Spectra (shown) or Gemcut
6 Lights
Diameter: 10" (25 cm)
Body Length: 19" (48 cm)
Extension: 5" (13 cm)
Gold (shown) or silver frame

Camelot 2612

Crystal: Gemcut
3 Lights
Diameter: 11 1/2" (29 cm)
Body Length: 16 1/2" (42 cm)
Extension: 5 1/2" (14 cm)
Gold (shown) or silver frame

camelot



Camelot 2610

Crystal: Gemcut
2 Lights
Diameter: 11 1/2" (29 cm)
Body Length: 7 1/2" (19 cm)
Extension: 5 1/2" (14 cm)
Gold (shown) or silver frame



Colonade bath bars shown on page 333.

Colonade 1919

Crystal: Gemcut
2 Lights
Diameter: 5" (13 cm)
Body Length: 12 1/2" (32 cm)
Extension: 3" (8 cm)



Colonade 1920

Crystal: Gemcut
3 Lights
Diameter: 8" (20 cm)
Body Length: 12" (30 cm)
Extension: 4 1/2" (11 cm)

colonade

Equinoxe



Equinoxe 2703

Crystal: Gemcut
 6 Lights Diameter: 17" (43 cm)
 Body Length: 13" (33 cm)
 Extension: 8 1/2" (22 cm)
 Silver (shown) or gold frame

Excelsior 2402

Crystal: Gemcut
 4 Lights
 Diameter: 13" (33 cm)
 Body Length: 17 1/2" (44 cm)
 Extension: 7" (18 cm)



Excelsior 2400

Crystal: Gemcut
 3 Lights
 Diameter: 13" (33 cm)
 Body Length: 8 1/2" (22 cm)
 Extension: 7" (18 cm)



Contessa 4820

Crystal: Strass (shown)
 or Gemcut
 3 Lights
 Diameter: 13" (33 cm)
 Body Length: 13" (33 cm)
 Extension: 6 1/2" (17 cm)
 Gold (shown) or silver frame

excelsior



jubilee

Jubilee 2670

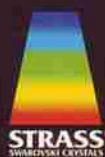
Crystal: Gemcut
 6 Lights
 Diameter: 14" (36 cm)
 Body Length: 14" (36 cm)
 Extension: 8" (20 cm)
 Gold (shown) or silver frame

contessa



Jubilee 2673

Crystal: Gemcut
 4 Lights
 Diameter: 11" (28 cm)
 Body Length: 15" (38 cm)
 Extension: 6" (15 cm)
 Gold (shown) or silver frame



New Orleans 3652 Crystal: Strass,[®] Heritage Handcut™
 (shown) or Legacy Collection™ 3 Lights Diameter: 12" (30 cm)
 Body Length: 18 1/2" (47 cm) Extension: 6" (15 cm)
 Variety of finishes, Etruscan Gold (23) shown

New Orleans



Century 1701
 Crystal: Heritage
 Handcut
 1 Light
 Diameter:
 4 1/2" (11 cm)
 Body Length:
 13" (33 cm)
 Extension:
 6" (15 cm)

New Orleans 3650

Crystal: Strass, Heritage
 Handcut (shown) or Legacy
 Collection 1 Light
 Diameter: 4 1/2" (11 cm)
 Body Length: 13" (33 cm)
 Extension: 6" (15 cm)
 Variety of finishes, French
 Gold (26) shown



New Orleans 3651

Crystal: Strass, Heritage Handcut (shown)
 or Legacy Collection 2 Lights Diameter:
 12" (30 cm) Body Length: 14 1/2" (37 cm)
 Extension: 5 1/2" (14 cm) Variety of finishes,
 Antique Silver (48) shown

Century 1703

Crystal: Heritage Handcut 3 Lights
 Diameter: 13" (33 cm) Body Length:
 17 1/2" (44 cm) Extension: 6" (15 cm)



Solitaire 1809

Crystal: Strass
 (shown) or
 Gemcut™
 3 Lights
 Diameter:
 13 1/2" (34 cm)
 Body Length:
 16" (41 cm)
 Extension:
 7" (18 cm)



Century 1702

Crystal: Heritage
 Handcut
 2 Lights
 Diameter:
 12" (30 cm)
 Body Length:
 14" (36 cm)
 Extension:
 5 1/2" (14 cm)

solitaire

Solitaire 1799

Crystal: Strass
 (shown) or Gemcut
 1 Light
 Diameter:
 5" (13 cm)
 Body Length:
 11" (28 cm)
 Extension:
 7" (18 cm)



Solitaire 1808

Crystal: Strass (shown) or Gemcut 2 Lights
 Diameter: 12" (30 cm) Body Length: 12" (30 cm)
 Extension: 4 1/2" (11 cm)

Madison 1586

Crystal: Legacy
 Collection
 2 Lights
 Diameter:
 12" (30 cm)
 Body Length: 15"
 (38 cm)
 Extension:
 6" (15 cm)



madison





Rivendell 7846 Crystal: Strass (shown) or Swarovski Spectra®
4 Lights Diameter: 16 1/2" (42 cm)
Body Length: 6 1/2" (17 cm)
Extension: 5 1/2" (14 cm)
Variety of finishes,
Etruscan Gold (23) shown

Rivendell 7847 Crystal: Strass (shown) or Swarovski Spectra®
8 Lights Diameter: 27 1/2" (70 cm) Body Length: 6 1/2" (17 cm)
Extension: 5 1/2" (14 cm) Variety of finishes, Heirloom Gold (22) shown



Rivendell



Rivendell 7848 Crystal: Strass (shown) or Swarovski Spectra®
12 Lights Diameter: 38 1/2" (98 cm)
Body Length: 6 1/2" (17 cm)
Extension: 5 1/2" (14 cm)
Variety of finishes, Silvergild (91) shown



Romanoff 5727

Crystal: Heritage Handcut
9 Lights

Diameter: 48" (122 cm)

Body Length: 5 1/2" (14 cm)

Extension: 4 1/2" (11 cm)

Variety of finishes,

Heirloom Silver (44) shown

Romanoff 5726

Crystal: Heritage Handcut
7 Lights

Diameter: 36" (91 cm)

Body Length: 5 1/2" (14 cm)

Extension: 4 1/2" (11 cm)

Variety of finishes,

Heirloom Gold (22) shown

Romanoff 5724

Crystal: Heritage Handcut

5 Lights Diameter: 24" (61 cm)

Body Length: 5 1/2" (14 cm)

Extension: 4 1/2" (11 cm)

Variety of finishes,

Heirloom Bronze (76) shown



colonade

Colonade 1921

Crystal: Gemcut 3 Lights

Diameter: 18" (46 cm)

Body Length: 6 1/2" (17 cm)

Extension: 4 1/2" (11 cm)



Colonade 1922

Crystal: Gemcut 5 Lights

Diameter: 27 1/2" (70 cm)

Body Length: 6 1/2" (17 cm)

Extension: 4 1/2" (11 cm)



Romanoff 5725

Crystal: Heritage Handcut

3 Lights Diameter: 18 1/2" (47 cm)

Body Length: 5 1/2" (14 cm)

Extension: 4 1/2" (11 cm)

Variety of finishes,

Black (51) shown



Romanoff

Colonade 1924

Crystal: Gemcut 9 Lights

Diameter: 47" (119 cm)

Body Length: 6 1/2" (17 cm)

Extension: 4 1/2" (11 cm)



Colonade 1923

Crystal: Gemcut 7 Lights

Diameter: 37" (94 cm)

Body Length: 6 1/2" (17 cm)

Extension: 4 1/2" (11 cm)



Dealer Support

Your partners in success.

We offer distributors a wide array of marketing tools and services to help increase sales, year after year.

Prestigious national advertising.

National ads supporting the Schonbek brand run in Architectural Digest, House Beautiful, Elle Decor, Traditional Home and Southern Accents.

Our trade ads in Interior Design, Home Lighting and Accessories, Hotel Spec, Residential Lighting, Hotels, ICON and Illuminotecnica speak directly to distributors, designers and contractors.

A generous co-op ad program.

Schonbek distributors are encouraged to run color magazine ads with our co-op funding. We offer a variety of co-op ads with the well-known look of Schonbek's national ad campaign. TV spots and radio scripts are also available.

Stock up on the Schonbek videos!

The Schonbek video is a dramatic presentation of the Schonbek story. We encourage you to hand out Schonbek videos liberally to prospective buyers. A looped, continuous-run video is available for in-store showing.

We also offer a video about rock crystal to help you explain to customers the value of this rare quartz.

Plentiful POP materials.

Schonbek brochures cover crystal types, chandelier finishes, custom design, decorating advice, the history of Schonbek – and accessories like lamps and candelabra.

Our combination POP poster and mini-catalog can serve as a handout or a mailer. Lucite holders are available for this piece and for our brochures.

Selected dealers qualify for in-store merchandising materials such as oversized canvas backdrops to set off chandelier displays, a wall sconce tower, lamp pedestals and Schonbek logo signage.

Also available are giant heraldic banners with the Schonbek coat of arms, window stickers and mounted ads "As Seen in Architectural Digest."

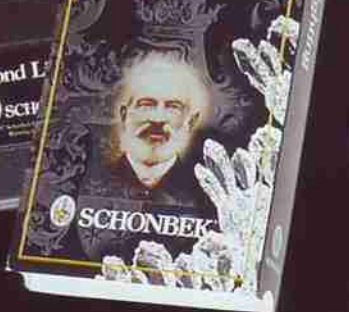
Beyond Lighting

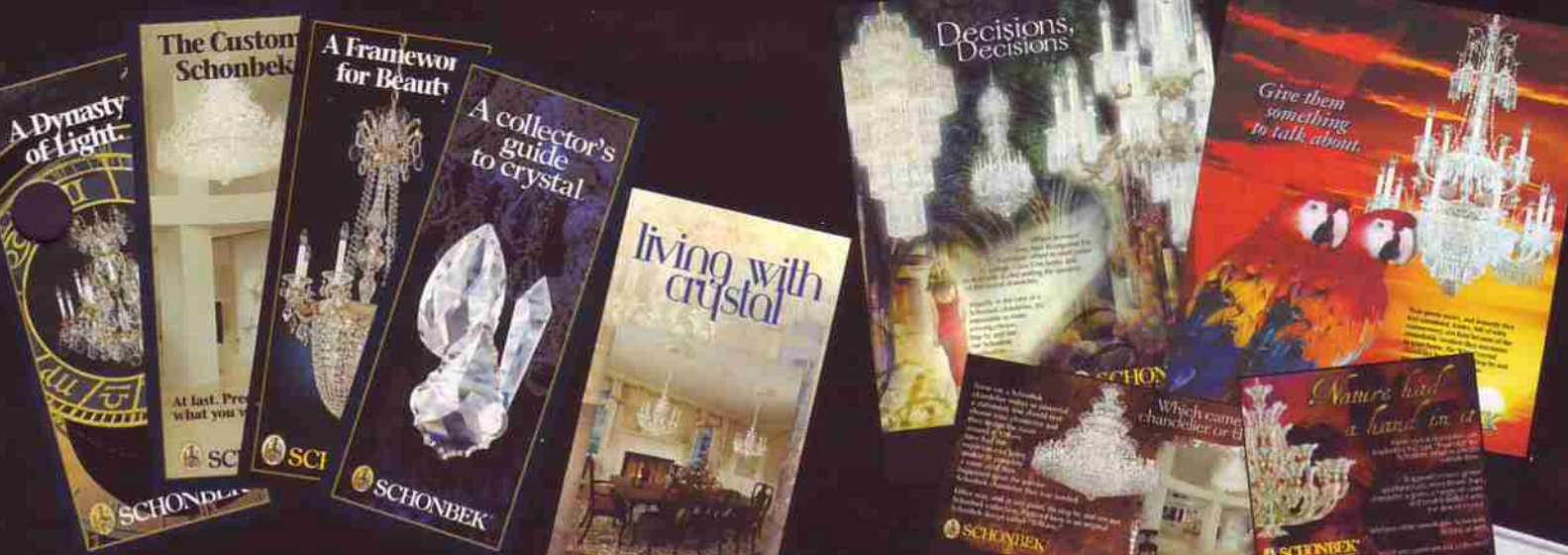
The home as personal statement.
A chandelier of light.
How to recognize a genuine Schonbek.
A tradition of innovation.

Collectible crystal.
The final word on finishes.
Your wish is our command.
Service: the unalloyed story.
Enough is not enough.

It's a Schonbek!
and here's how to sell it.

Beyond Lighting





A Dynasty of Light
SCHONBEK

The Custom Schonbek
At last. Present what you want.
SCHONBEK

A Framework for Beauty
SCHONBEK

A collector's guide to crystal
SCHONBEK

living with crystal
SCHONBEK

Decisions, Decisions
SCHONBEK

Give them something to talk about.
SCHONBEK

Which came first, the chandelier or the room?
SCHONBEK

Names had a hand in it
SCHONBEK

Ownership documents authenticate Schonbek products.

Credentials are important to buyers of crystal chandeliers. Every Schonbek chandelier comes with a Certificate of Authenticity to document its unique history. And if your customer wants more details, she can send in our customer survey and receive a Pedigree document.

Help with training.

Our training manual, video and PowerPoint presentation give your staff the facts they need to answer customer questions. Schonbek reps use these materials for in-store training.

In addition, we have a Sales & Product Specialist who visits showrooms to guide distributors through the complexities of the Schonbek product line.

We also schedule formal training sessions on store merchandising at our factory.

Support for custom and commercial projects.

We have a long history of working successfully with distributors on contract work. Commercial case studies are available to help you make the sale.

Play The Decorating Game at www.schonbek.com

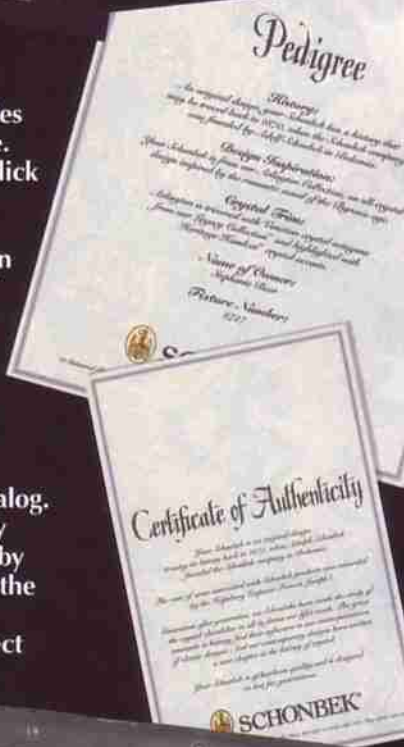
Schonbek's innovative website invites browsers to play The Decorating Game. They view a variety of room sets and click to insert different chandeliers.

There's information about crystal types, Schonbek finishes, custom design and Schonbek lamps and candelabra. Every month there's a chance to win a prize. Visitors can also request a free design consultation.

Get on the Extranet!

Authorized dealers can tap into the Schonbek Extranet and our on-line catalog. You can print out trim diagrams on any product. You can shop for chandeliers by specific characteristics. You can check the status of orders.

The Schonbek Extranet is your direct connection to the Schonbek database, customized to you, and secure from all other users.



Index by Fixture Number

1300	236, 327	2406	200, 316	2780	80	5010	60	5411	148	5876	27, 329	7176	71
1301	236, 327	2407	200, 316	2782	79	5011	64	5412	145	5877	33, 314	7178	70
1302	237	2408	200, 316	2784	82, 313	5012	59	5413	144	5886	23, 329	7846	52, 333
1303	237	2412	201	2785	82, 313	5013	63	5472	151	5888	27, 329	7847	52, 333
1305	236	2413	200	2790	82	5017	97, 325	5600	134, 325	5889	27, 329	7848	52, 333
1308	235	2414	199	2962	281	5018	97, 325	5601	134, 325	5890	182, 311	7849	41, 328
1310	234	2415	198	2965	281	5019	96	5602	135, 325	5891	183, 311	7850	43, 328
1350	90	2416	197	2991	229, 327	5020	96	5606	131	5892	182, 311	7851	52
1351	90, 313	2417	196	2992	229, 327	5021	95	5607	131	5893	183, 311	7854	48, 328
1353	91	2418	195	2994	227	5022	94, 308	5609	130	5894	186, 311	7855	40, 328
1354	91	2419	194	2995	229	5024	93	5615	129	5895	186, 311	7856	42, 328
1357	90	2428	193	2996	228	5029	97, 325	5620	133	5896	186, 311	7857	41, 328
1558	310	2429	192	2997	226	5032	221	5622	132	5897	187, 311	7858	53, 313
1560	310	2610	165, 330	2998	225	5033	221	5625	135	5898	187, 311	7859	53, 313
1562	310	2612	165, 330	2999	228	5034	220	5626	134	6600	185, 330	7860	53, 313
1564	310	2616	168, 318	3601	227	5035	326	5701	233, 326	6601	185, 330	7862	41
1568	310	2617	168, 318	3608	224	5036	220, 326	5702	233, 326	6602	185, 330	7863	40
1574	310	2618	168, 318	3610	223	5037	326	5703	232, 326	6603	185, 330	7864	39
1586	279, 332	2619	168, 318	3648	264	5038	188, 317	5705	233	6611	184	7865	43
1590	278	2620	168, 318	3650	262, 332	5040	189, 317	5706	232	6612	184	7866	42
1592	279	2621	167	3651	261, 332	5042	189, 317	5707	231	6613	184	7872	49
1594	279	2622	167	3652	262, 332	5044	189, 317	5708	230	6614	183	7882	48
1596	278	2623	166	3656	262	5048	191, 317	5711	86, 323	6615	183	7883	47
1701	272, 332	2624	166	3657	261	5054	190, 317	5712	88, 323	6616	182	7884	46
1702	273, 332	2626	165	3658	260	5055	191, 319	5714	89	6617	182	7892	53
1703	273, 332	2627	164	3659	264, 309	5060	191	5715	86	6618	181	9620	37, 329
1705	272	2628	163	3660	259	5062	190	5716	88	6619	180	9621	37
1707	273	2629	162	3661	263	5064	189	5717	85	6704	45, 328	9622	36, 308
1709	273	2638	161	3662	258	5066	188	5718	87	6710	50	9624	35
1712	272	2639	160	3702	179, 312	5069	172, 322	5719	84	6712	51	9631	54, 329
1799	268, 332	2642	159	3703	179, 312	5070	171, 322	5722	89, 312	6714	51	9632	55
1800	269, 316	2643	158	3704	178, 312	5071	172, 322	5723	85, 312	6716	50	9633	55
1801	271	2648	305	3708	177, 323	5072	67	5724	86, 333	6720	44	9635	54
1803	271	2650	304	3710	177, 323	5073	69	5725	333	6722	45	9702	142, 320
1804	269, 316	2651	303	3714	179	5074	68	5726	333	6724	44	9704	143
1805	271	2652	305	3716	178	5076	173	5727	333	6805	216, 327	9705	143
1806	270	2653	303	3718	177	5077	173	5742	123, 323	6806	216, 327	9706	142
1807	269	2654	304	3720	176	5078	172	5743	125, 323	6807	216, 327	9708	141
1808	268, 332	2657	302	3722	175	5080	171	5744	127, 312	6808	216, 327	9715	140
1809	267, 332	2661	301	3756	105, 324	5082	169	5745	123, 312	6809	219	9822	139, 320
1810	270, 316	2663	301	3757	105, 324	5090	170	5747	125, 312	6810	215	9827	139
1811	271	2667	300	3758	105, 324	5100	242, 249	5750	126	6811	215	9829	138
1812	270, 316	2670	305, 331	3761	107, 324	5101	245	5751	127	6812	214	70002	80
1813	268	2673	305, 331	3762	107, 324	5102	243, 248, 319	5755	122	6813	213	70005	78
1817	267	2703	291, 331	3763	107, 324	5103	242, 248	5756	126	6814	212	70012	106
1818	265	2710	288	3769	105	5104	243, 249	5757	124	6815	210	70015	102
1819	266	2711	291	3770	102	5107	244, 308	5770	121	6816	209	70043	108
1829	272	2712	289	3771	102	5110	241, 247	5771	121	6817	219	70062	66
1919	299, 330	2713	291	3772	101	5112	240, 246	5773	120	6818	218	70064	62
1920	299, 330	2714	289	3773	100	5115	111	5775	119	6860	211	71002	80
1921	299, 333	2716	288	3774	99	5117	110	5782	118	6862	216	71005	76, 306
1922	299, 333	2724	287	3780	106	5136	109	5802	317	6863	216	71012	106
1923	299, 333	2725	287	3782	104	5138	108	5846	25	6864	216	71015	104
1924	299, 333	2726	286	3784	103, 313	5143	116, 319	5847	25	6870	157, 319	71043	110
1925	297	2727	285	3785	103, 313	5144	114, 319	5848	25	6872	157	71062	65
1926	293	2731	290, 315	3792	103	5147	115	5849	26	6873	156	71064	61
1927	298	2732	290, 315	4820	275, 331	5148	114	5851	21	6874	155	71080	93
1928	294	2733	290, 315	4821	276	5149	115	5852	23	6876	154	71081	95
1929	298	2734	290, 315	4822	276	5150	113	5853	23	6883	255	71101	42
1931	297	2756	81, 321	4823	277	5155	117	5854	22	6884	254	71104	39
1932	294	2757	81, 308, 321	4824	274	5157	117	5855	22	6902	253, 320	71230	109
1933	296	2758	81, 321	4825	275	5158	116	5856	20	6905	253	71231	109
1934	293	2761	83, 321	4826	277, 316	5400	150, 320	5858	21	6906	252	71232	109
1936	295, 315	2762	83, 321	5000	69, 322	5401	150, 320	5867	33, 314	6908	251	71250	111
1937	295, 315	2763	83, 321	5001	69, 322	5402	147, 320	5868	33, 314	6910	250	71251	111
1938	295, 315	2769	81	5002	69, 322	5403	320	5869	33, 314	7169	71, 321	71252	111
1939	295, 315	2770	77	5003	68, 322	5405	151	5870	32	7170	72, 321	2780C	307
1946	280	2771	77	5005	67	5407	150	5871	32	7171	72	5009C	307
1948	280	2772	76	5007	66	5408	149	5872	31	7172	73	5149C	307
2400	201, 331	2773	75	5008	65	5409	147	5873	30	7173	73		
2402	201, 331	2774	74	5009	61	5410	146	5874	29	7174	72		

Codes for crystal types:

S = Strass®
 A = Swarovski Spectra®
 H = Heritage Handcut™
 M = Gemcut™
 V = Vintage Collection™
 V1 = Vintage Collection™ amethyst
 V2 = Vintage Collection™ amber
 L = Legacy Collection™
 Q = Rock Crystal

Codes for finishes:

All finishes have 2-digit numerical codes. Visit www.schonbek.com for list, or call 800-836-1892.

Fixture numbers:

Our fixtures are numbered for easy identification as follows: style number, dash, finish, type of crystal.
 Examples: 7883-22S is a Rivendell (7883) with Heirloom Gold (22) finish and Strass (S) crystal.
 4820-40M is a Contessa (4820) with Silver (40) finish and Gemcut (M) crystal. 5100-91V2 is an Adagio (5100) with Silvergild (91) finish and amethyst colored Vintage Collection crystal (V2).

For Product Reference Guide with complete details call 800-836-1892.



*... have been
... of light and color
... etc. ... making*

Schonbek Worldwide Lighting Inc., 61 Industrial Blvd.,
Plattsburgh NY 12901-1908. USA. 2505A Chemin Jean-Adam,
St. Sauveur des Monts, Québec J0R 1R7 Canada.

Tel: 800.836.1892 or 518.563.7500 Fax: 518.563.4228 email: sales@schonbek.com
www.schonbek.com © Schonbek Worldwide Lighting, Inc. 2002